

This lab estimates your genome-wide percentage of Neanderthal ancestry

Got Neanderthal DNA?

An estimated **2.6%** of your DNA is from Neanderthals.

Paul Kostro (you)



2.6%

30th percentile

Average European user



2.7%

MODERN HUMANS

Higher brow
Narrower shoulders
Slightly taller



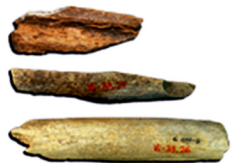
NEANDERTHALS

Heavy eyebrow ridge
Long, low, bigger skull
Prominent nose with developed nasal chambers for cold-air protection



Friends & Family

Want to see how you compare to your friends? [Invite them now.](#)



Genetic Evidence for Neanderthals

From bones like these three (Vi33.16, Vi33.25, Vi33.26) found in the Vindija cave in Croatia, scientists extracted Neanderthal DNA. Using these samples they painstakingly assembled the Neanderthal genome sequence.

More about Neanderthals

Neanderthals were a group of humans who lived in Europe and Western Asia. They are the closest evolutionary relatives of modern humans, but they went extinct about 30,000 years ago. The first Neanderthals arrived in Europe as early as 600,000 to 350,000 years ago. Neanderthals – *Homo neanderthalensis* – and modern humans – *Homo sapiens* – lived along side each other for thousands of years. Genetic evidence suggest that they interbred and although Neanderthals disappeared about 30,000 years ago, traces of their DNA – between 1 percent and 4 percent – are found in all modern humans outside of Africa. Apart from the curiosity of finding what percentage of a modern human's genome is Neanderthal, the information has great value for science. By comparing our DNA with Neanderthal DNA, scientists can detect the most recent evolutionary changes as we developed into fully modern humans. [Read more about the science behind this tool.](#)

So what, I'm a caveman?

Actually yes, but that has little to do with the percentage of Neanderthal DNA in your genome. Our perception of Neanderthals as big oafs is clouded by our own notion of superiority and pop culture caricatures. How we are different and why modern humans survived and Neanderthals didn't is still mostly a mystery.

Neanderthal and proud?



Whatever your Neanderthal percentage, there's a T-shirt for you and your family. [Check it out.](#)

What does this really mean?

There are many intriguing theories about what traits the smidgen of Neanderthal DNA may have imparted on modern humans, but we don't know yet if having a little more than average Neanderthal DNA could explain why someone is extra brawny, short or boorish. Those traits might just be regular human characteristics.